

Superior Accuracy. Zero Maintenance.

Neptune® MACH 10® Ultrasonic Meter



The MACH 10® ultrasonic water meter features solid state ultrasonic technology including a factory-calibrated, replaceable unitized measuring element (UME) with no degradation of accuracy over time. Combined with a corrosion-resistant, lead free, high-copper alloy maincase, the MACH 10 is built to withstand demanding service conditions and deliver sustained accuracy over the life of the meter.

- Sizes 3", 4", and 6"
- Extended low-flow range for superior leak detection
- Accuracy sustained over meter life
- Can be installed in both horizontal and vertical applications
- Open flow path design with low pressure loss
- Advanced ultrasonic technology with easily replaceable UME design
- Lead free, high-copper alloy maincase
- UL Listed and FM Approved (standard)
- Available in standard turbine and compound lay lengths
- No maintenance

Specifications

AWWA C715 Compliant
NSF/ANSI 61 Certified
UL Listed/FM Approved
(Standard)

Application

- Cold water measurement of flow in potable, combination potable and fire service, and reclaim/secondary water applications.

Maximum Operating Water Pressure

- 175 psi

Operating Water Temperature Range

- +33°F to +122°F
(+0.5°C to +50°C)

Environmental Conditions

- Operating temperature:
+14°F to +149°F
(-10°C to +65°C)
- Storage temperature:
-40°F to +158°F
(-40°C to +70°C)

Options

Sizes

- 3"
- 4"
- 6"

Meter Options

- Potable water/fire service (UL & FM certification comes standard)
- Reclaim water

Warranty

- Neptune provides a limited warranty for performance, materials, and workmanship. See warranty statement for details.

System Compatibility

- Compatible with Neptune R900® and CMIU. Also available as MACH 10®)R900i™ for an integrated radio solution and MACH 10®)TC for Sensus Touch Coupler compatibility.

Operating Characteristics

Meter Size	Extended Low Flow @ 100% Accuracy (+/- 3.0%)	Normal Operating Range @ 100% Accuracy (+/- 1.5%)	Safe Maximum Operating Capacity	
			Normal Operation (Non Fire Service)	Fire Service
3"	0.50 U.S. gpm	0.75 to 500 U.S. gpm	500 U.S. gpm	420 U.S. gpm
4"	0.75 U.S. gpm	1.5 to 1250 U.S. gpm	1250 U.S. gpm	1100 U.S. gpm
6"	1.0 U.S. gpm	2.0 to 2000 U.S. gpm	2000 U.S. gpm	1800 U.S. gpm

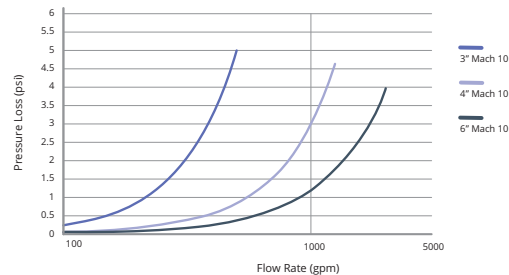
Available Units of Measure

Consumption	Rate
Gallons	GPM
Cubic Feet	GPM
Cubic Metres	LPM
Cubic Meters (International)	LPM
Imperial Gallons	GPM
Acre-Feet*	GPM
Litres*	LPM
Kilolitres*	LPM

*Unit cannot be displayed on LCD

Pressure Loss

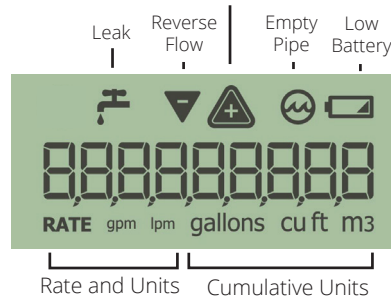
Typical meter performance. Individual results may vary.



LCD Display

9-digit display for extra resolution on manual reads.

Forward Flow + Warning for Excessive Flow

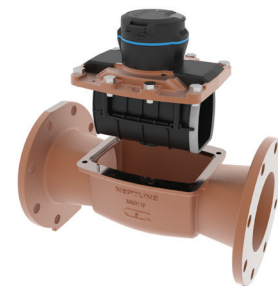


Dimensions

Meter Size	Length	Height	Weight
3"	12"	9½"	39 lbs
	17"	9½"	42 lbs
4"	14"	11"	51 lbs
	20"	11"	57 lbs
6"	18"	12¾"	79 lbs
	24"	12¾"	91 lbs

Registration

High Resolution (8-digit reading)	3"	4"	6"
1 U.S. Gallons	✓	✓	
10 U.S. Gallons			✓
0.1 Cubic Feet	✓	✓	
1 Cubic Feet			✓
0.01 Cubic Metres	✓	✓	
0.1 Cubic Metres			✓



Unitized Measuring Element (UME)



neptunetg.com

Neptune Technology Group
1600 Alabama Highway 229
Talladega, AL 36078
800-633-8754 f 334-283-7293