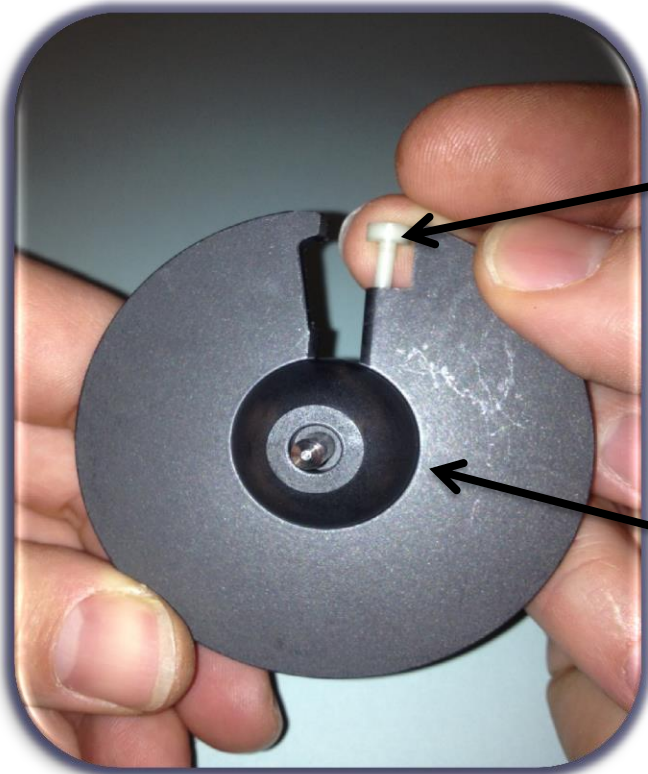


# T-10<sup>®</sup> Meter Assembly Instructions

# Chamber Assembly



# Chamber Assembly



**Thrust Roller**

**Ball and Disc**

**Insert thrust roller in the ball and disc.**

# Chamber Assembly



**Lower Half**

**Ball and Disc**

**Insert ball and disc into lower half.**

# Chamber Assembly



**Diaphragm**

**Lower Half**

**Insert diaphragm into lower half.**

# Chamber Assembly



**Upper Half**

**Lower Half**

**Snap upper and lower half together.**

# Chamber Assembly



**Chamber**

**Outlet Gasket**

*\*\*Please note Outlet Gasket will be removed for competition.*

**Insert outlet gasket into chamber.**

# Meter Assembly



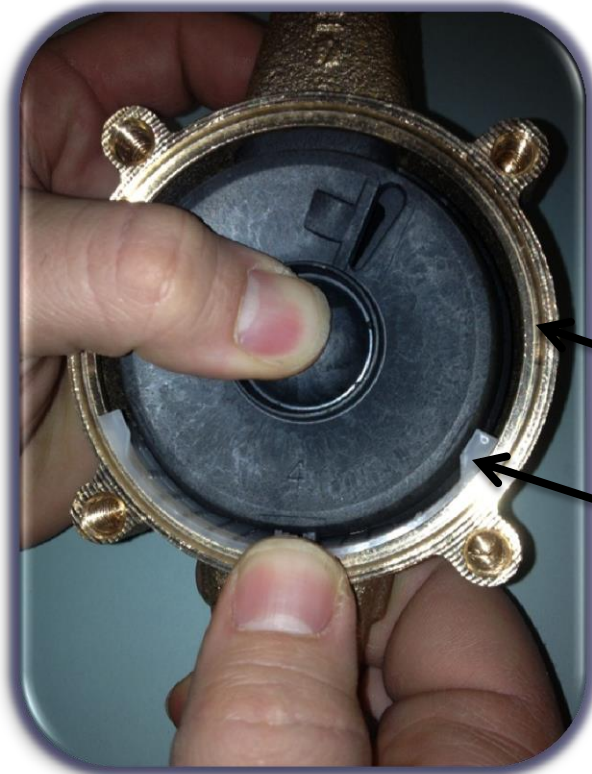
**Maincase**

**Chamber Assembly**

**Place chamber assembly into meter maincase.  
Ensure outlet gasket is facing the outlet of the meter.**



# Meter Assembly

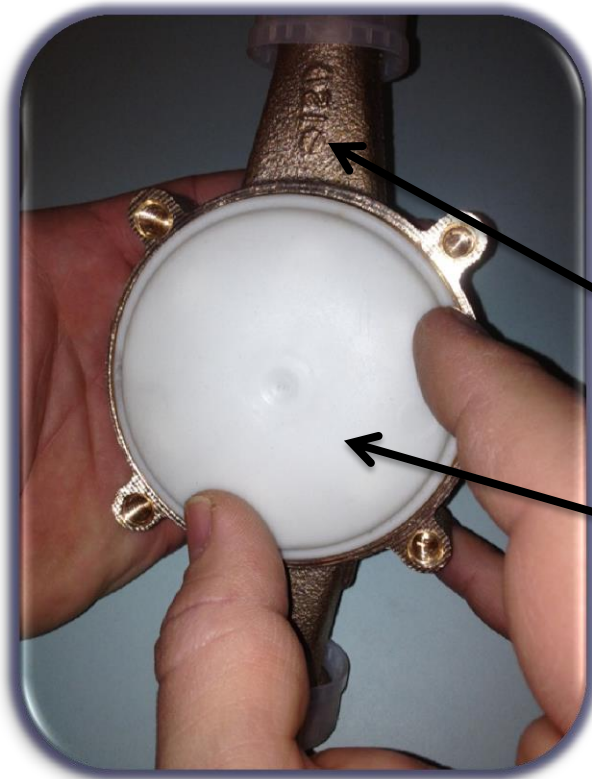


**Maincase**

**Strainer**

**Place strainer into meter maincase as shown above. Ensure the strainer is fully seated and flush with the machined surface.**

# Meter Assembly



**Meter Outlet**

**Liner/Gasket**

**Place liner/gasket into meter maincase.  
Ensure liner/gasket dome is facing up away from  
meter.**

# Meter Assembly



**Meter**

**Bottom Cap**

**Place bottom cap on meter maincase.**

# Meter Assembly



**Meter**

**Bolts**

**Insert bolts into maincase and tighten them with your finger.**

# Meter Assembly



**1/2" Wrench**

**Finish tightening bolts with 1/2" wrench.**

# Complete Meter Assembly



**Register**

**Flip meter over and place register on bayonet.  
Secure by turning the register clockwise.**