



E-CODER®)R900i™ Pit Installation

Installation Guidelines

Required Tools:

Neptune® R900® RF test device

Neptune magnet



STEP 1

To install the antenna, remove the protective cap from the antenna connection. To remove the protective cap, push down and twist the protective cap counter-clockwise. *Note: make sure there is a red, O-ring gasket in the connector, and there is Novagard gel in the connector cavity.*



STEP 2

Remove the black rubber washer from the antenna connection on the side of the E-CODER®)R900i™ endpoint. If retrofitting an existing installation, clean any dirt or debris on the endpoint's antenna connection and black plastic latch plate, so that the new antenna will have a clean surface to make a proper seal.



STEP 3

When connecting the antenna to the endpoint, make sure that the center conductor pin inside the connector is lined up with the hole in the center of the threaded connector on the side of the E-CODER)R900i.



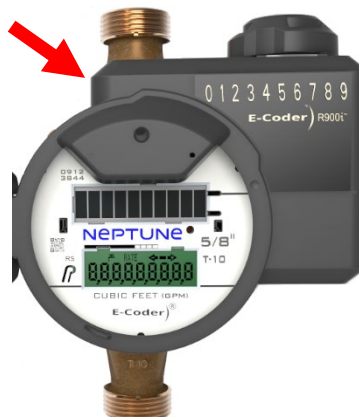
STEP 4

Once you properly align the pin, push the antenna connector down fully onto the threaded connection, so that the endpoint's latch plate is engaged on all three posts. Once the antenna connection is properly seated, turn clockwise until it locks into place.



STEP 5

Once the antenna is installed, using a magnet, swipe the endpoint on the flat corner closest to the register face from the ground up as depicted in the image below.



STEP 6

Verify valid reading and activation using a Neptune RF test device.

