



Know Your Way Forward



Solution Overview

Win Your Day with Technology Designed for the *Business of Water*.

At Neptune®, products aren't just products. We have a passion for delivering innovative, reliable solutions developed to address your most important priorities, timeframe, and budget. When you buy Neptune, you are assured a solution that is always forwards and backwards compatible with your other Neptune asset investments. Neptune will help you minimize cost, eliminate inefficient processes, and maximize revenue. Our products and services are "future proof", enabling you to build on rather than change out.

Striving to always be your *most valued partner*, we offer solutions tailored to you so that you can focus on the *critical work of water*.

Find the Right Solution for You

Intuitive, User-Friendly Software

Your data, safe, and always available

The introduction of advanced technology to utilities has opened a flood gate of possibilities: from increasing efficiency and accuracy to time and cost savings. Software is the engine that drives this innovation and acts as the dashboard — keeping an eye on your water operations to ensure that they are running smoothly.

Neptune® 360™

Neptune® 360™ provides you with a single, easy-to-use, integrated solution no matter how you collect your data. Manage, share, and secure your data with cloud-based software designed exclusively for the *business of water*.

Neptune 360 gives you the ability to tailor your software to your utility with a platform that can grow with your needs, and without added IT infrastructure. Transition from a mobile metering system to fixed network with ease. Seamlessly integrate across departments, providing access to actionable data to optimize operational efficiency.

Neptune 360 provides on-demand access to your critical data, helping you quickly identify potential leaks, excessive consumption, and reverse flow — improving customer response time and enabling proactive and efficient issue identification and resolution. All data can be viewed in a single user interface for any read method.

Monitored 24/7 from a world-class data center, Neptune 360 assures you of the highest level of security, redundancy, and disaster recovery protection for your data.

Neptune® 360™ Mobile

Neptune® 360™ Mobile provides direct communication to the office using standard wireless devices you already own, including smart phones and tablets. Get your data on demand just by opening a web browser. Check trends, sync data from the field, and answer customer questions with ease, without ever having to go into the office.

NEPTUNE[®] 360™



Neptune® 360™

Neptune® 360™ Mobile

Data Collection That Works For You

The flexibility to migrate at your own pace

There are many different avenues to collecting the data that drives the software, including walk by, drive by, or AMI. All of these share the same function – receiving information. Only Neptune allows you the flexibility to customize data collection to your individual criteria. One size definitely does not fit all. Neptune provides the flexibility to choose the right option, or hybrid of options, for you as your needs continue to change and grow.

The Neptune R900® System

Neptune's R900® System is comprised of data collectors, endpoints, and connectivity working together seamlessly to receive and transmit information about your system and ensure that your operations are running efficiently and effectively.

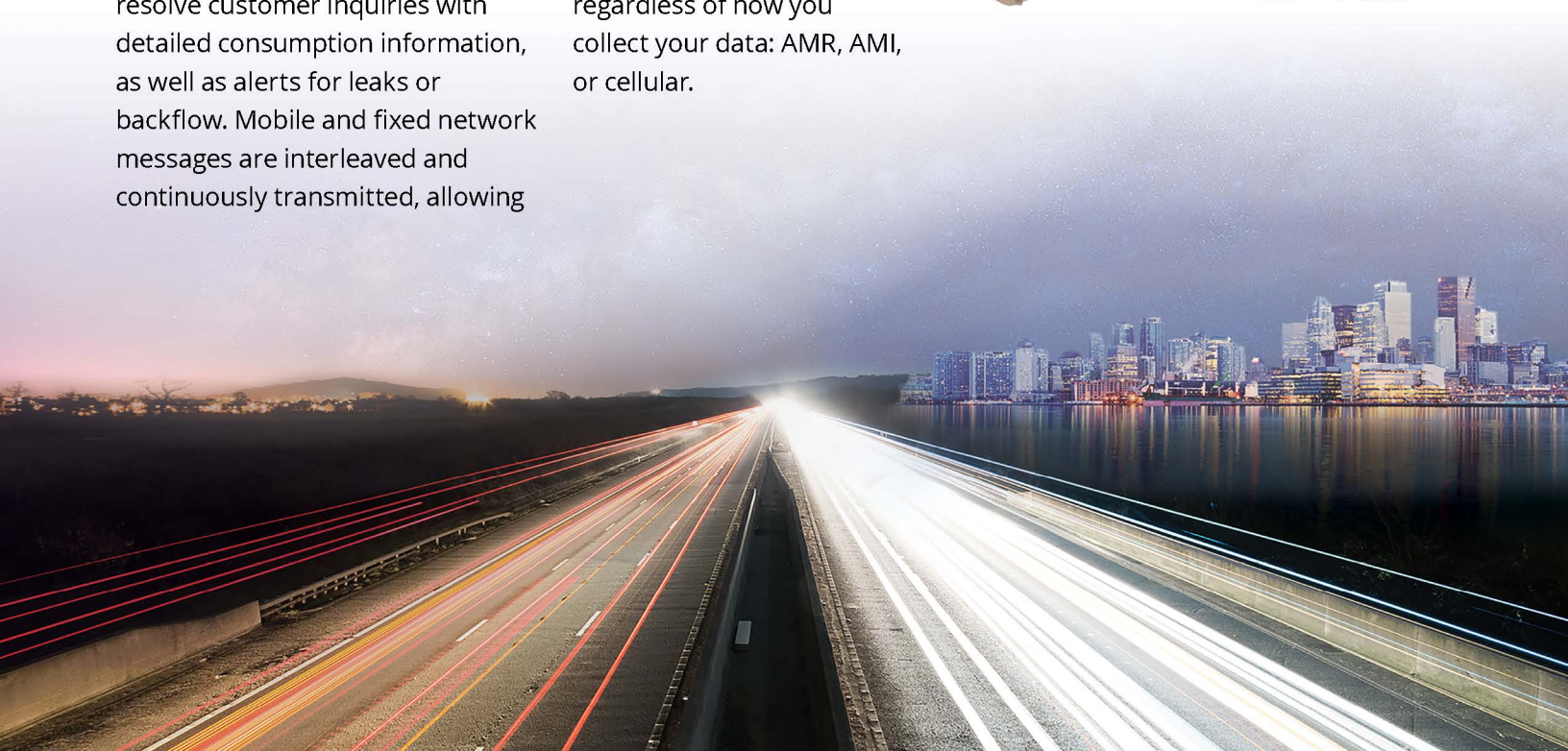
Neptune's R900 System endpoints eliminate the need for separate reading systems, site visits, endpoint reprogramming, or re-configuration. Neptune endpoints greatly improve access to meter readings and help to proactively identify potential issues and resolve customer inquiries with detailed consumption information, as well as alerts for leaks or backflow. Mobile and fixed network messages are interleaved and continuously transmitted, allowing

you to maintain backup mobile-reading capability with the same endpoints. Gateways collect metering consumption data as well as daily leak, reverse flow, and days of no flow alerts from all communication-enabled meters and send it to a cloud-based server to optimize your fixed network.

Neptune will configure the right mix of products to achieve your goals, regardless of how you collect your data: AMR, AMI, or cellular.



*ProCoder™)R900i™
with T-10® Meter*





Belt Clip Transceiver



Mobile Data Collector

The **mobile data collector** offers a portable meter reading option that fits in any vehicle to make Automatic Meter Reading (AMR) accurate and efficient. Data is available in real time, allowing you the ability to view and share consumption activity graphs on-site to address high bill complaints and other customer inquiries.

The **belt clip transceiver** offers multi-platform compatibility and accelerates data retrieval by eliminating meter access issues and reducing meter reading time.

Neptune's cellular solution offers you the flexibility to meet your business needs either as a last mile supplement, or for your full AMI deployment. Easily integrated into your existing R900 System, Neptune's cellular solution assures a reliable, highly secure, and easy-to-deploy AMI data solution to start collecting actionable meter data immediately.

If you choose to own or operate your own network, Neptune's **proprietary AMI solution** is flexible and tailored to each utility. Or, save time and money with a **Network-as-a-Service (NaaS)** solution that outsources the management and monitoring of your AMI infrastructure for the life of your project—including design, installation, and ongoing operations and maintenance. We facilitate deployment of a communication infrastructure that optimizes your AMI network performance with no operational burden and a design that can grow with your needs.

Neptune will configure the right mix of products to achieve your needs, regardless of how you collect your data.



Cellular Endpoint Wall Version



Pit Version



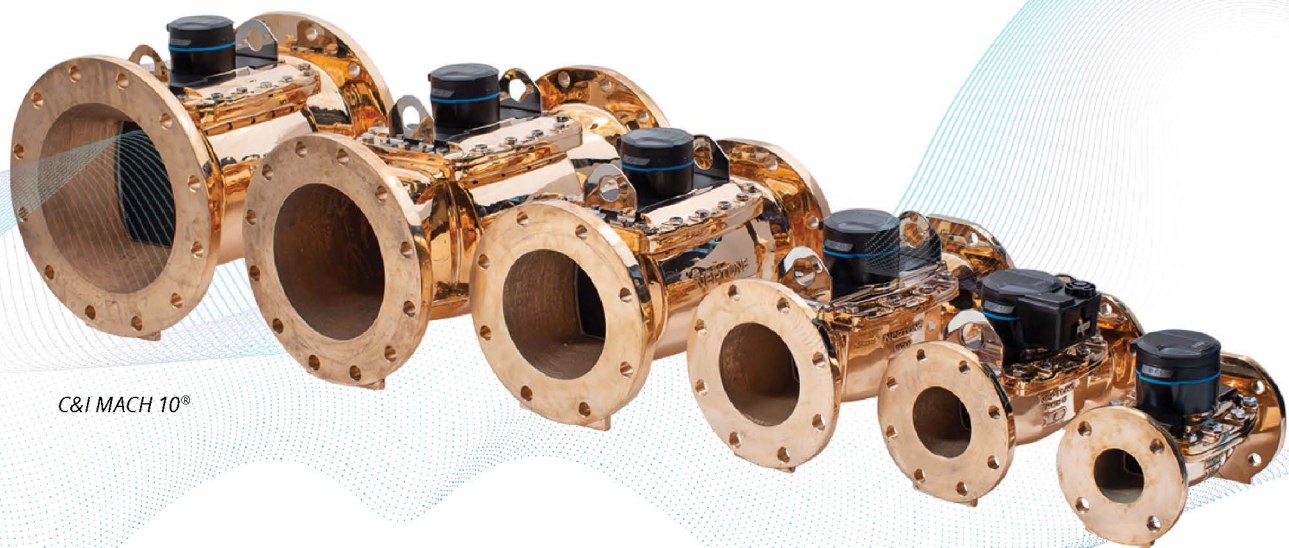
Neptune® Gateway

A Better Meter Matters

Accurate measurement tools to maximize revenue

The water meter is the critical source of the precise data collected to help you manage your water resources and take informed action. Neptune offers a full line of residential and commercial meters that provide you with the best source of measurement of the data that is crucial to keeping your operation running reliably and efficiently. Our meters are accurate, durable, and engineered to measure every drop, minimizing Non-Revenue Water and the need to frequently maintain or replace your meters.

Neptune offers different types of metering technologies so that you can select the right meter for your application.



C&I MACH 10®

MACH 10® Ultrasonic Water Meters

SIZES: ½", ¾", 1", 1½", 2",
3", 4", 6", 8", 10", 12"

The MACH 10® features no moving parts that wear and tear over time, ensuring maintenance-free, sustained accuracy and performance over the life of the meter and maximum revenue generation from your metering program. Its high-resolution measurement allows you to accurately capture extremely low flow rates, while a rugged, lead free bronze maincase adds to its long-term performance. Save time and money while delivering superior accuracy, and unmatched sampling rates. The MACH 10 is also available with an integrated endpoint, which



C&I MACH 10®

eliminates the hassle of wiring and reliably delivers data to optimize system performance. Ideal for potable, fire service and reclaim water applications, the MACH 10 meter line is highly versatile and allows for reduction in inventory and standardization on one reliable meter.

The C&I MACH 10® has the only solid state, field-replaceable Unitized Measuring Element (UME) that can be easily changed out at the end of its ten-year life for additional convenience and savings.



MACH 10®)R900i





T-10® Meter

T-10® Mechanical Meters

SIZES: 5/8", 3/4", 1", 1 1/2", 2"

The Neptune T-10® meter is time proven for dependability and provides a wide effective flow range for maximum revenue. Its proprietary polymer measuring chamber maximizes long-term accuracy, and the durable lead free bronze maincase is guaranteed for the life of the meter.

TRU/FLO® Compound Meters

SIZES: 2" HP, 3", 4", 6", 6" X 8"

The TRU/FLO® captures reads with technology specially designed for extremely wide flow rate applications. Combining low-flow sensitivity with high-flow capacity, the TRU/FLO ensures accurate measurement at all flow rates. For reading convenience, registers can be mounted in any one of four positions on the meter.



TRU/FLO®
Compound Meter.



HP Turbine Meter

High Performance (HP) Turbine Meters

SIZES: 1 1/2", 2", 3", 4", 6", 8", 10"

The Neptune HP Turbine water meter exceeds industry standards for performance and accuracy with the widest flow ranges of any turbine meter on the market. The rugged, lead free, high-copper alloy maincase is corrosion-resistant, lightweight, and compact, and offers the flexibility of adaptability for both present and future systems.

Neptune offers different types of metering technologies so that you can select the right meter for your application.

High Performance (HP) Fire Service Turbine Stainless Steel (S) Meters

SIZES: 3", 4", 6", 8", 10"

The Neptune® HP Fire Service S meter is designed to measure both domestic and fire service usage where flow rates are moderate to high. Exceeding continuous flow rate industry standards, it offers some of the widest flow ranges of any fire service turbine meter on the market.



HP Fire Service Turbine Meter

HP PROTECTUS® III Stainless Steel (S) Fire Service Meters

SIZES: 4", 6", 8", 10"

Neptune's HP PROTECTUS® III S Fire Service water meter is the industry standard for combined fire service/drinking water applications, measuring extremely wide flow ranges. Designed to measure both domestic and fire service water usage through a single water line, the HP PROTECTUS® III S accurately and reliably registers leaks and unauthorized use from fire service lines.



HP PROTECTUS® III Stainless Steel Fire Service Meter



E-CODER® and T-10® Meter

Registers

Neptune registers provide reliable, accurate meter reading, advanced customer consumption data, and priority alarms for continuous leaks, tamper, and reverse flow events. Neptune registers help you increase efficiency by providing detailed data to help you improve customer service outcomes.

Choose between standalone registers or those integrated with endpoints to provide two-way communications of your advanced metering data. Simultaneous mobile and fixed reading capabilities facilitate migration from mobile to fixed network reading without site visits or reprogramming. Neptune gives you the flexibility to combine the right register with the right meter for your needs.




E-CODER®)R900i™

ProCoder™

ProCoder™)R900i™





Neptune can help you to bridge the gap between where you are today and where you want to be in the future. Our approach is to build on rather than change out, to help you make the most of the resources in which you've already invested. Neptune ensures that our products and services are "future proof", offering backward and forward compatibility that prevents you from having to rip and replace, to minimize cost, eliminate inefficient processes, and maximize revenue. Working together we can help you to best serve your customers while protecting and preserving the water in your community — because every drop matters.

Being your leading partner in water metering tools, technology, and connectivity, we will guide the way forward and connect you to **what's next in water.**



NEPTUNE
TECHNOLOGY GROUP

#winyourday



neptunetg.com

Neptune Technology Group

1600 Alabama Highway 229
Tallahassee, AL 36078
800-633-8754 f 334-283-7293

**Neptune Technology Group
(Canada) Ltd.**

7275 West Credit Avenue
Mississauga, Ontario L5N 5M9
Canada Tel: 905-858-4211
Fax: 905-858-0428

Neptune Technology Group Inc.

Avenida Ejercito Nacional No 418
Piso 12, Despacho 1203
C lonia Polanco V Secci n
C.P. 11560 Delegaci n, Miguel Hidalgo
Mexico D.F.
Tel: (55) 5203-5708, (55) 5203-4032,
(55) 5203-5294

#winyourday